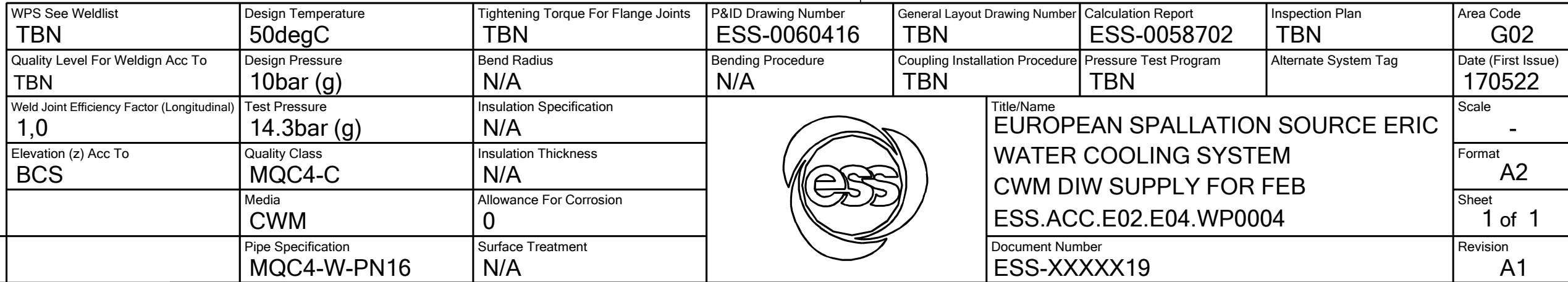



Printed: 23 MAY 2017



ERECTION MATERIALS					
PT NO	COMPONENT DESCRIPTION	DN	MATERIAL	QTY (mm)	REMARKS
	<u>GASKETS</u>				
27	GASKET, EN 1514-1, TYPE XXX, T=1,5mm	150	EXPANDED GRAPHITE	1	
28	GASKET, EN 1514-1, TYPE XXX, T=1,5mm	150	EXPANDED GRAPHITE	1	
	<u>BOLTS</u>				
29	HEXAGONAL NUT, M6M, ISO 4032	20	EN 1515-4, A4	8	
30	WASHER, BRB, ISO 7089	20	A4, HV≥250	16	
31	90 mm HEXAGONAL BOLT, M6S, ISO 4017	20	EN 1515-4, A4-70	8	
35	HEXAGONAL NUT, M6M, ISO 4032	20	EN 1515-4, A4	8	
36	WASHER, BRB, ISO 7089	20	A4, HV≥250	16	
37	80 mm HEXAGONAL BOLT, M6S, ISO 4017	20	EN 1515-4, A4-70	8	
	<u>SUPPORTS</u>				
38	PENETRATION ATTA	150		1	
39	ESS Atta	15		1	

P&ID Drawing Number ESS-0060416	General Layout Drawing Number TBN	Calculation Report ESS-0058702	Inspection Plan TBN	Area Code G02
Bending Procedure N/A	Coupling Installation Procedure TBN	Pressure Test Program TBN	Alternate System Tag	Date (First Issue) 170522
		Title/Name EUROPEAN SPALLATION SOURCE ERIC WATER COOLING SYSTEM CWM DIW SUPPLY FOR FEB ESS.ACC.E02.E04.WP0004	Scale -	
			Format A2	
			Sheet 1 of 1	
			Document Number ESS-XXXXX19	
			Revision A1	